

RERA No.: .....

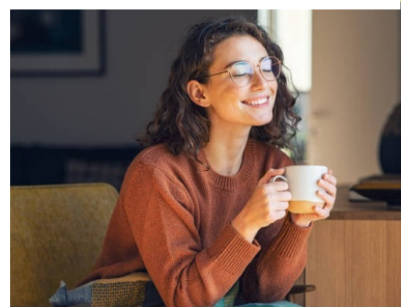
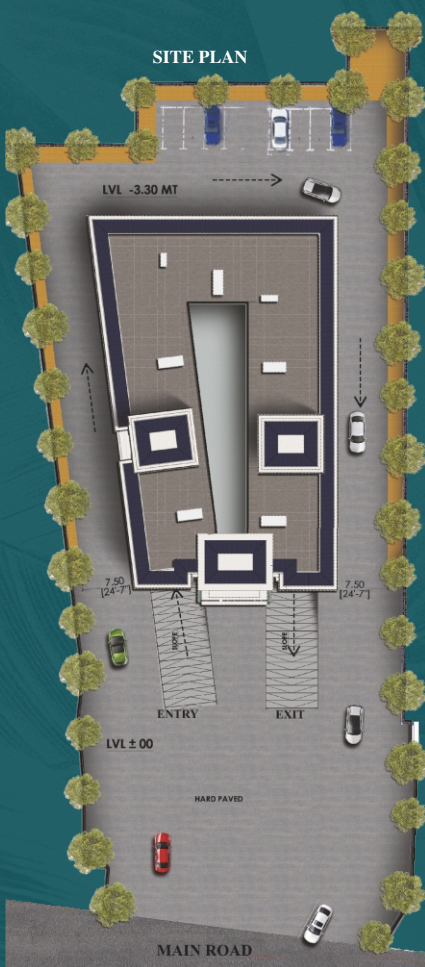


# THE TERRACE

*Redefine urban living. Discover comfort.*



“Welcome to the most sophisticated urban stay in Dehradun. One of its kind mixed use abode with a rich blend of high quality residences and luxury shopping.”



**Modern shopping arcade - 10 marque double height shops at the ground level**

**Rooftop Restaurant - large enough for a 100 person event**

**Residences - 84 spacious studio apartments**

**Power - 24 by 7 power backup both for shopping arcade and residences**

**Parking - covered car parks and ample guest parking**

**Concierge Desk. CCTV security. Physical guards. On site Maintenance team**



**GROUND FLOOR PLAN**



**FIRST FLOOR PLAN**

## URBAN LIVING

**Kitchen** - modular storage, spill proof wash basins, built in equipments

**Washroom** - branded luxury fitments from Kohler / Roca

**Bedrooms** - wooden flooring, subtle lighting, 6 feet balcony with pristine views, false ceiling

**Living room** - modern design false ceiling, Italian vitrified tiles

**Electricals** - heavy duty wiring from Finolex / Polycab / Havells. Geyser in every unit.

**Lift** - high speed quality lift from Kone / Schinder

24 by 7 water supply



**TYPICAL FLOOR PLAN**



## 1 BHK FLOOR PLAN - TYPE A

Covered Area- 503.21 SQFT.  
super Area- 654.17 SQFT.

1 BHK +  
*Balcony*



## 1 BHK FLOOR PLAN - TYPE A

Covered Area- 503.21 SQFT.  
super Area- 654.17 SQFT.



## 1 BHK FLOOR PLAN - TYPE B

Covered Area- 868.97 SQFT.  
super Area- 1129.66 SQFT.

1 BHK +  
*L shaped corner  
Balcony*

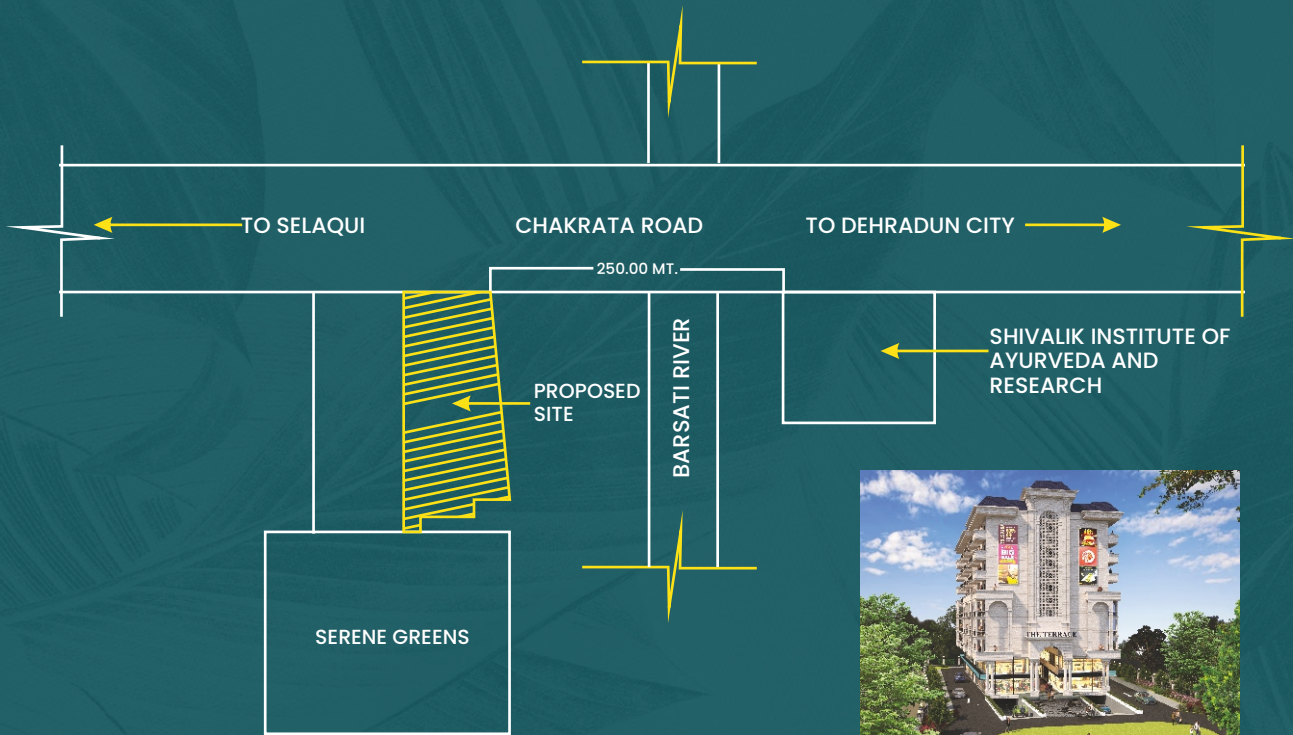


## 1 BHK FLOOR PLAN - TYPE B

Covered Area- 868.97 SQFT.  
super Area- 1129.66 SQFT.

# THE TERRACE

*Redefine urban living. Discover comfort.*



Landmark	Distance from Site
Selaqui Industrial Area	6.7 Km
Graphic Era Institute of Medical Sciences	1.0 Km
Subharti Medical College And Hospital	1.4 Km
Indian Military Academy	11.0 Km
Railway Station	15.5 Km